

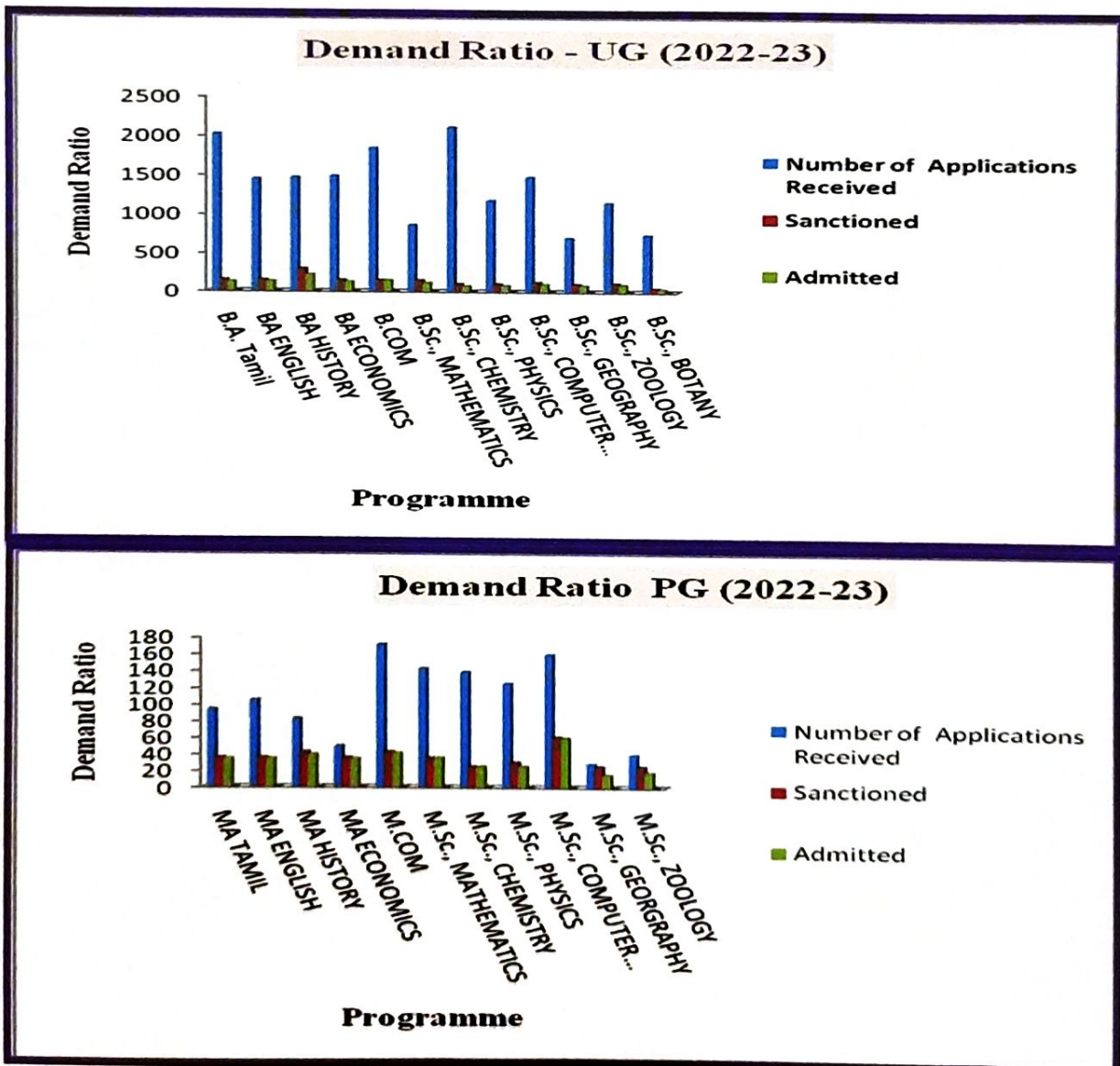


**CRITERION II – TEACHING - LEARNING AND EVALUATION**

**2.1 Student Enrollment and Profile**

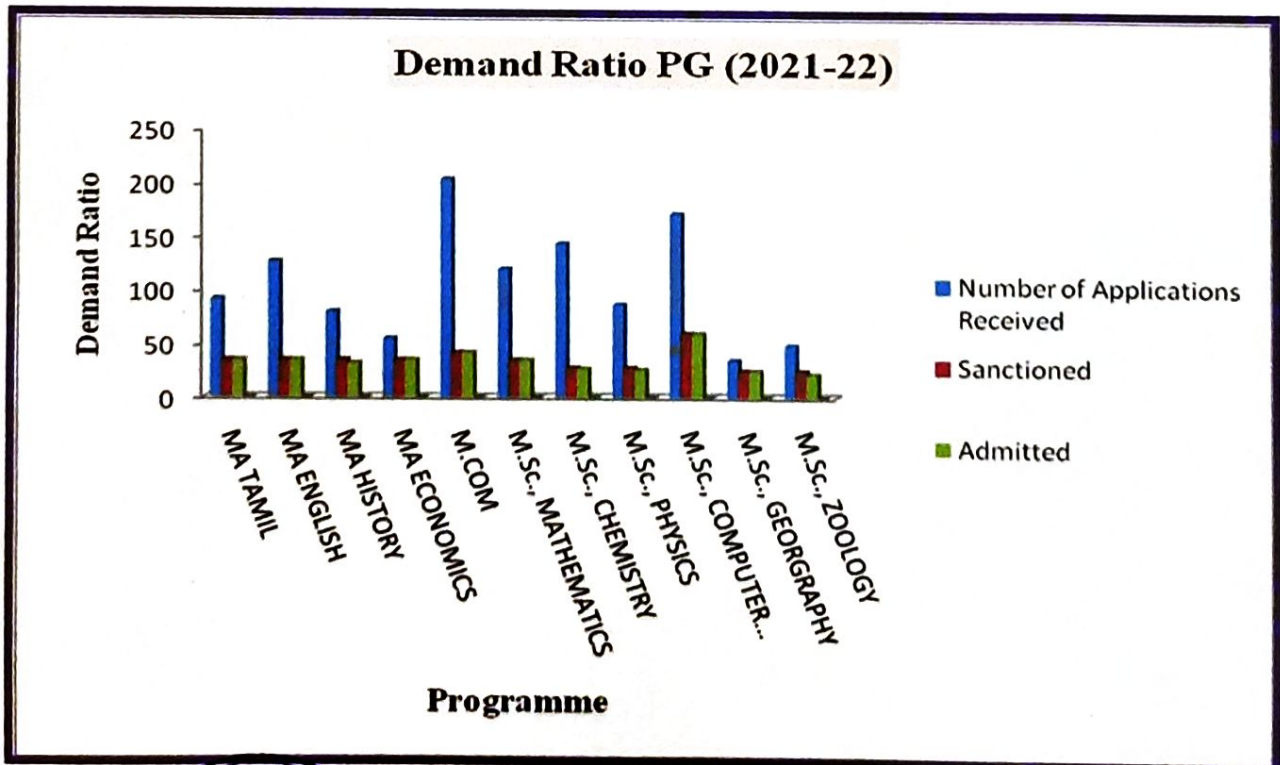
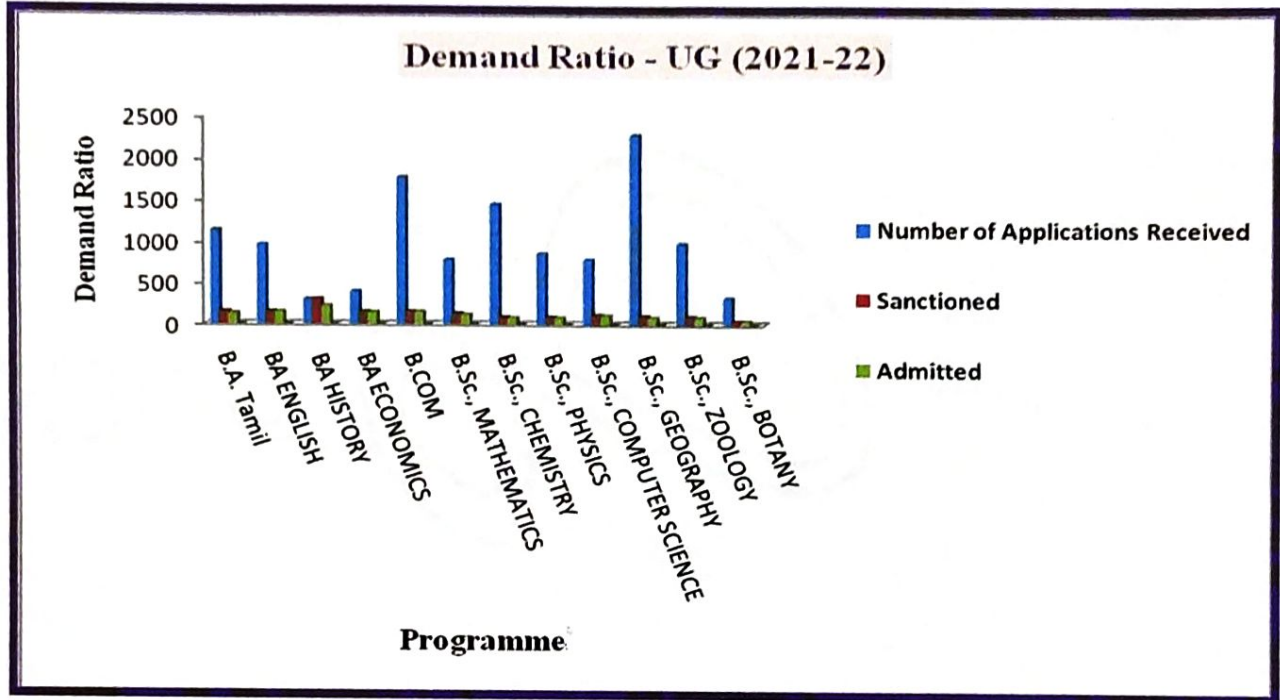
**2.1.1 Average Enrollment Percentage**

**Demand Ratio (2022-2023)**



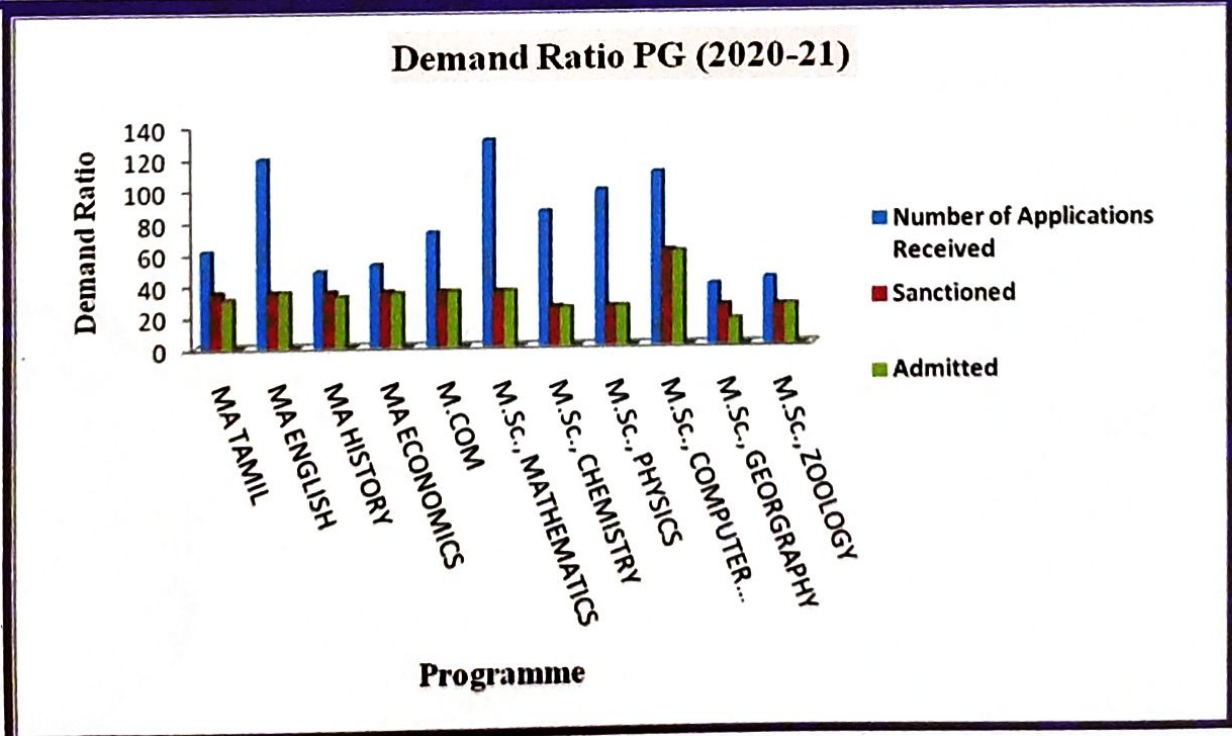
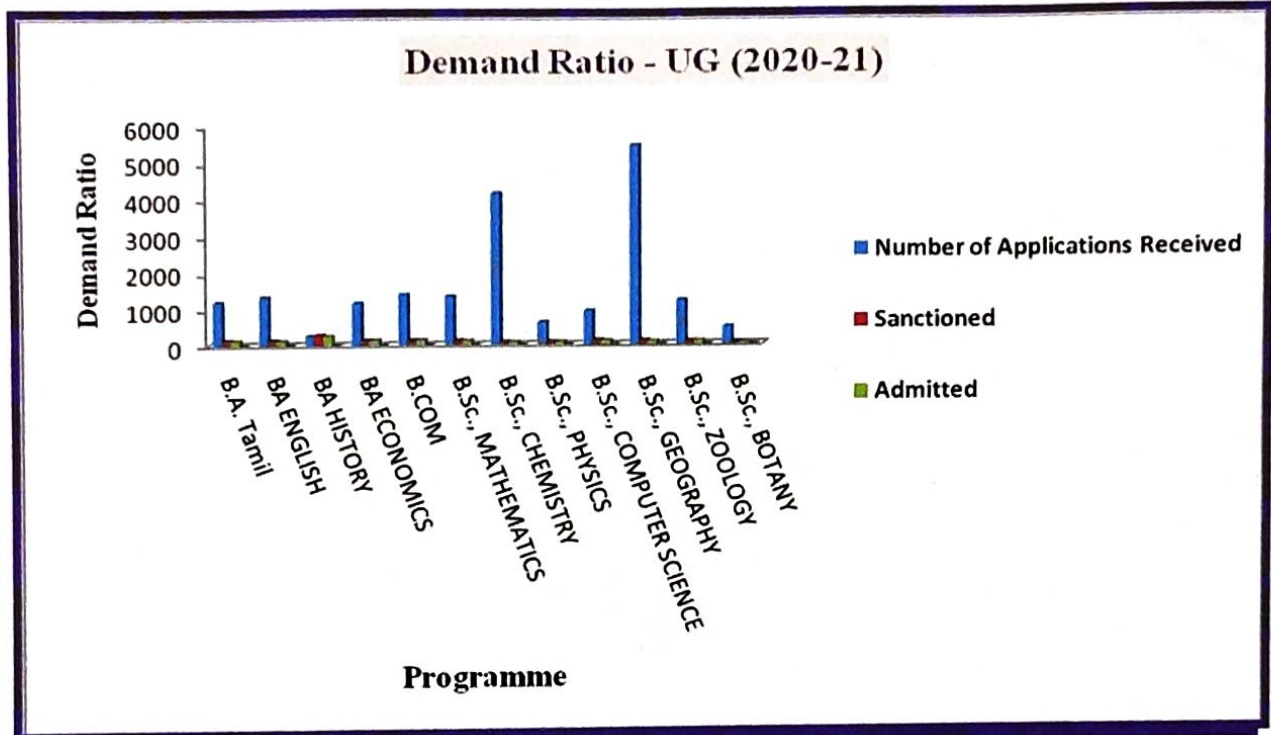


**Demand Ratio (2021-2022)**



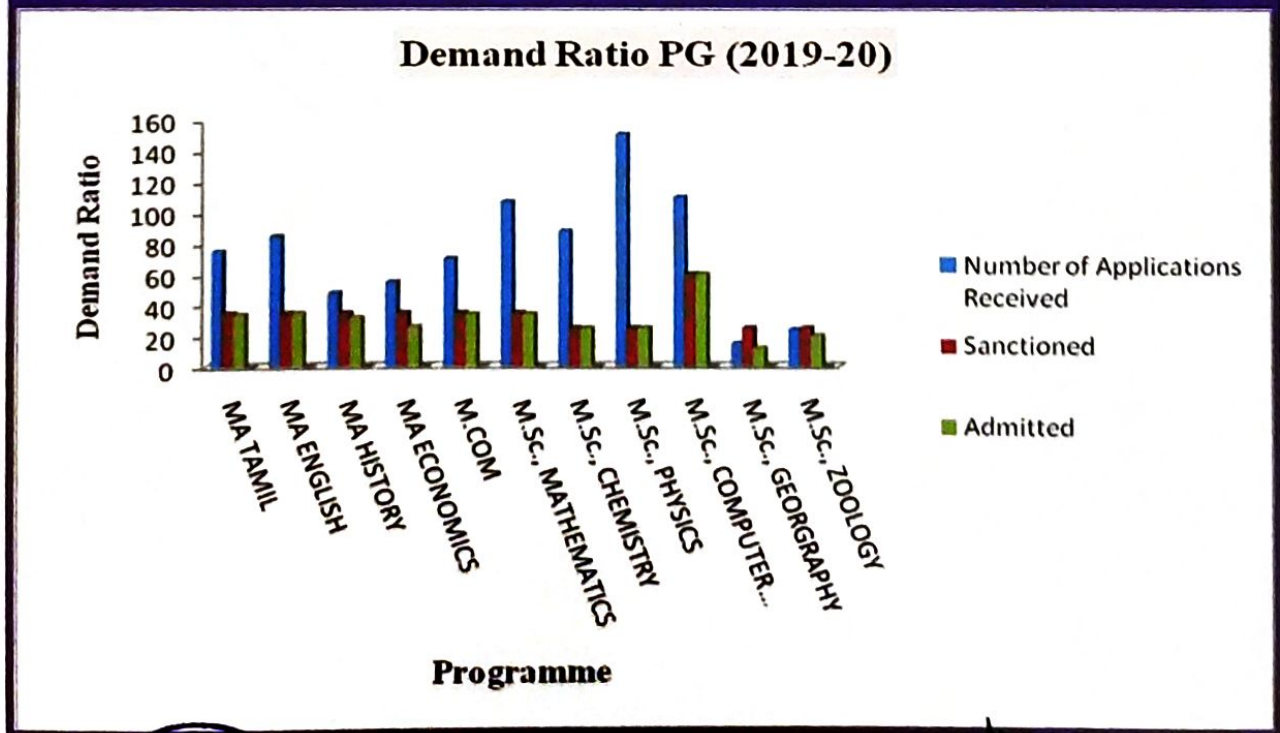
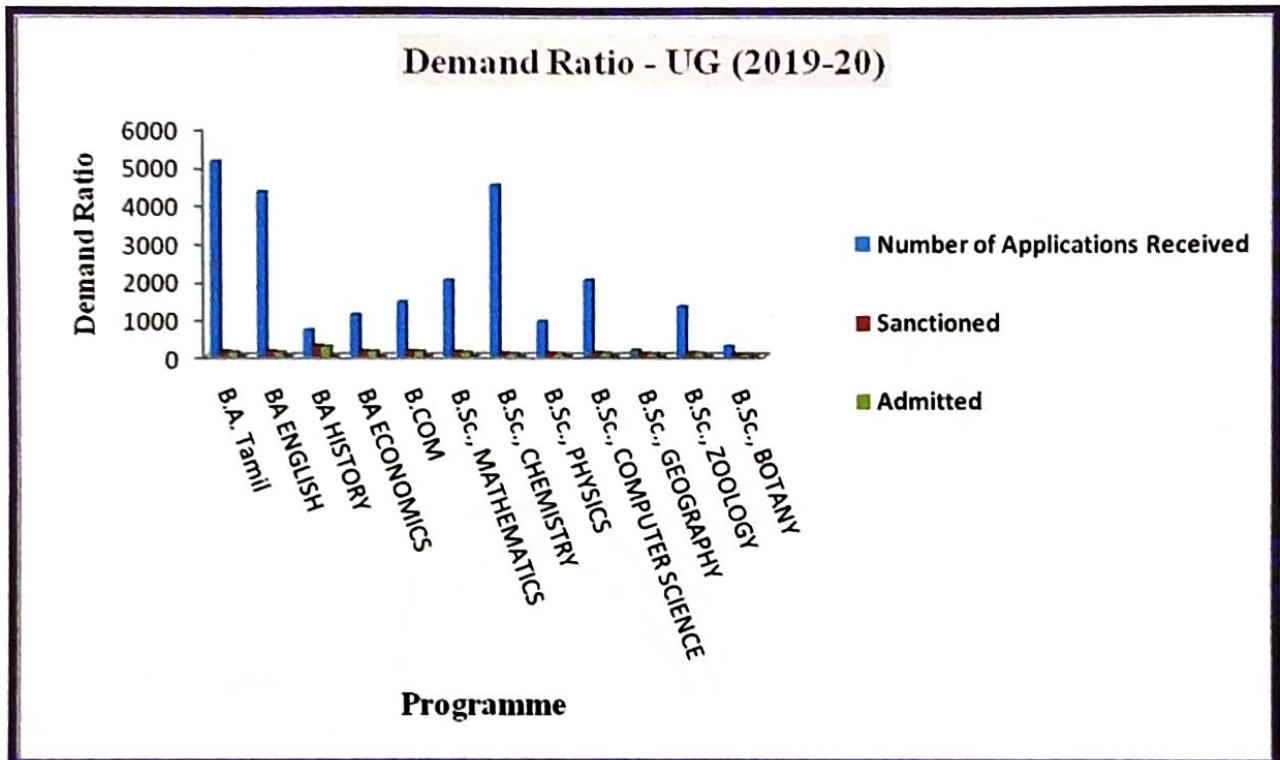



**Demand Ratio (2020-2021)**





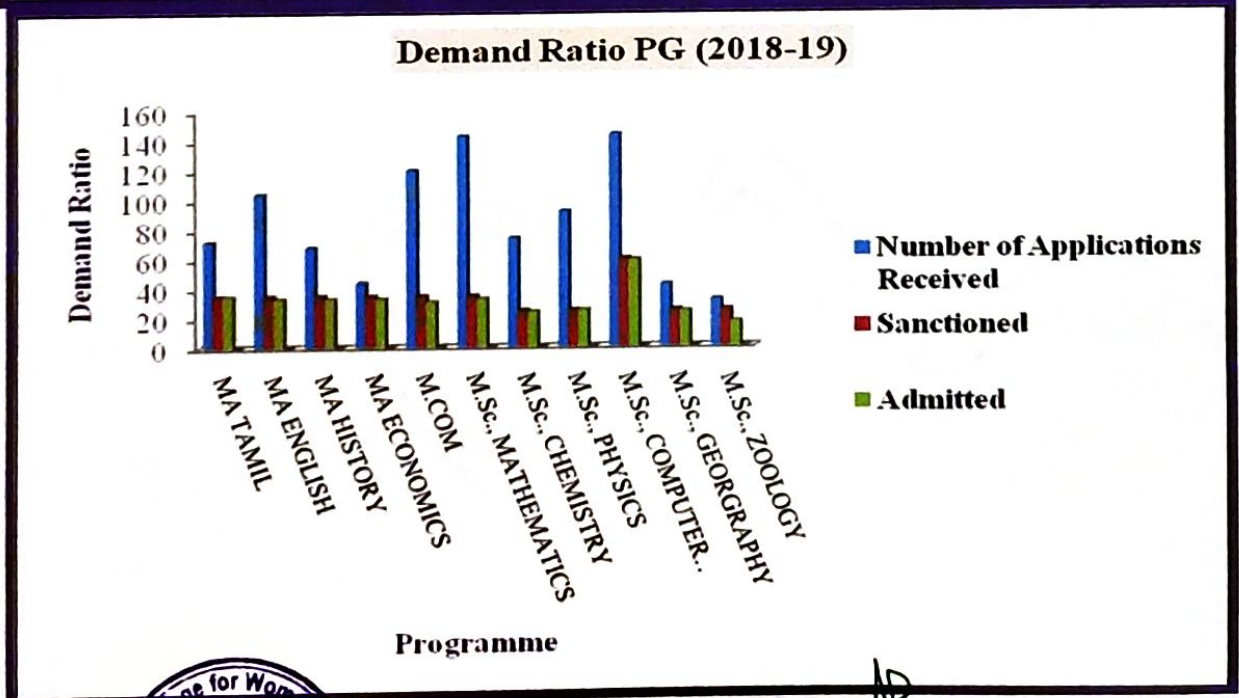
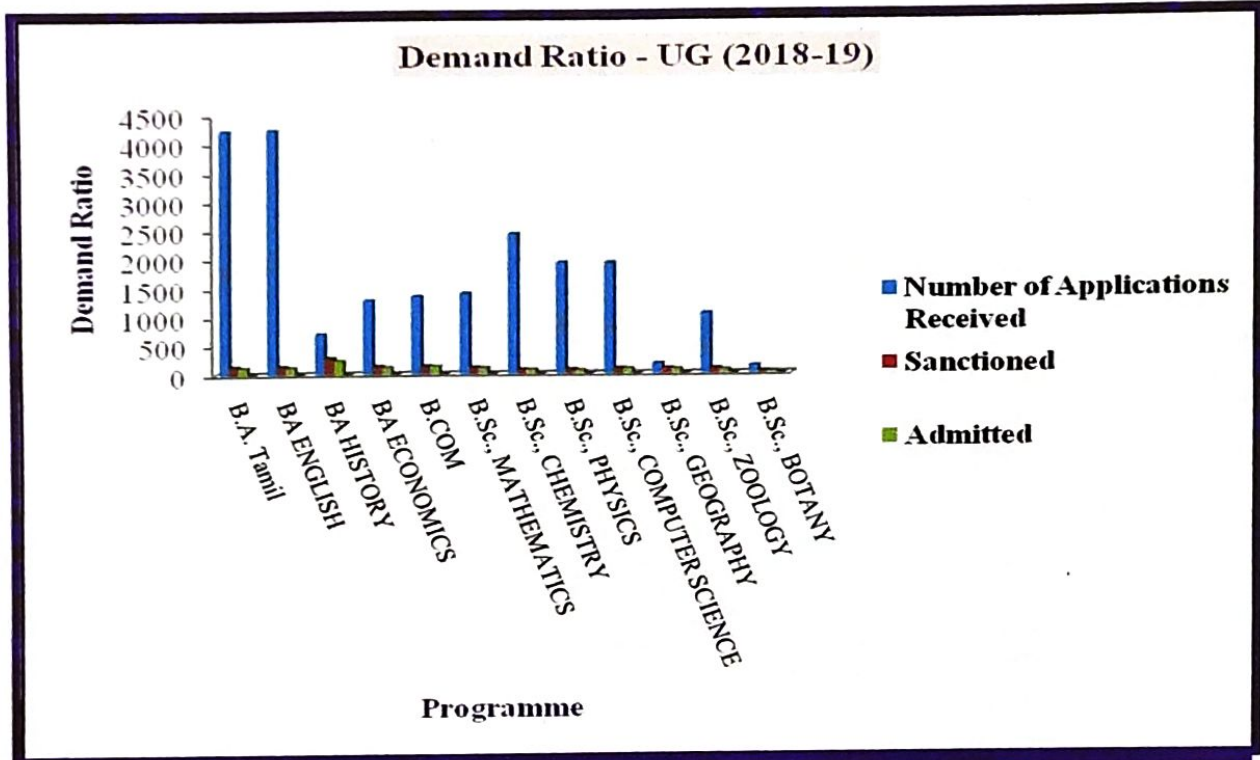
**Demand Ratio (2019-2020)**



  
**PRINCIPAL**  
 Government College for Women (Autonomous)  
**KUMBAKONAM**



**Demand Ratio (2018-2019)**



*S. Anil*  
**PRINCIPAL**  
 Government College for Women (Autonomous)  
**KUMBAKONAM.**